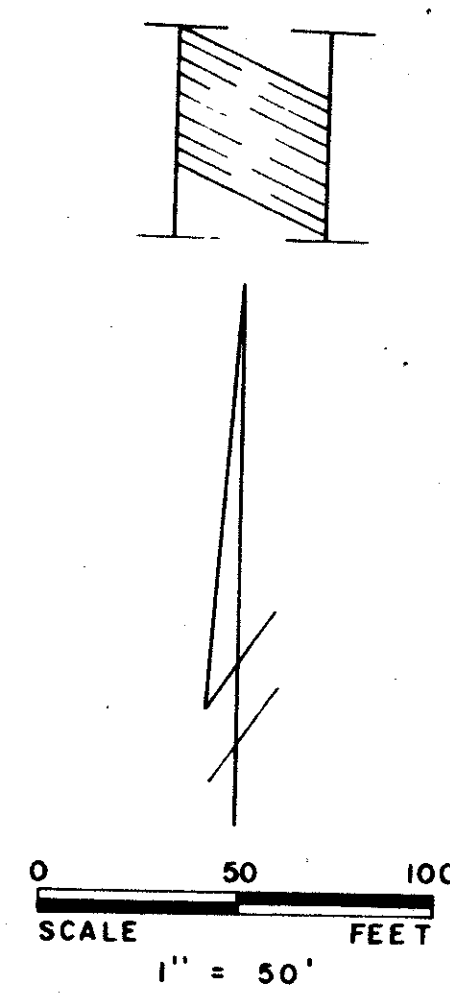
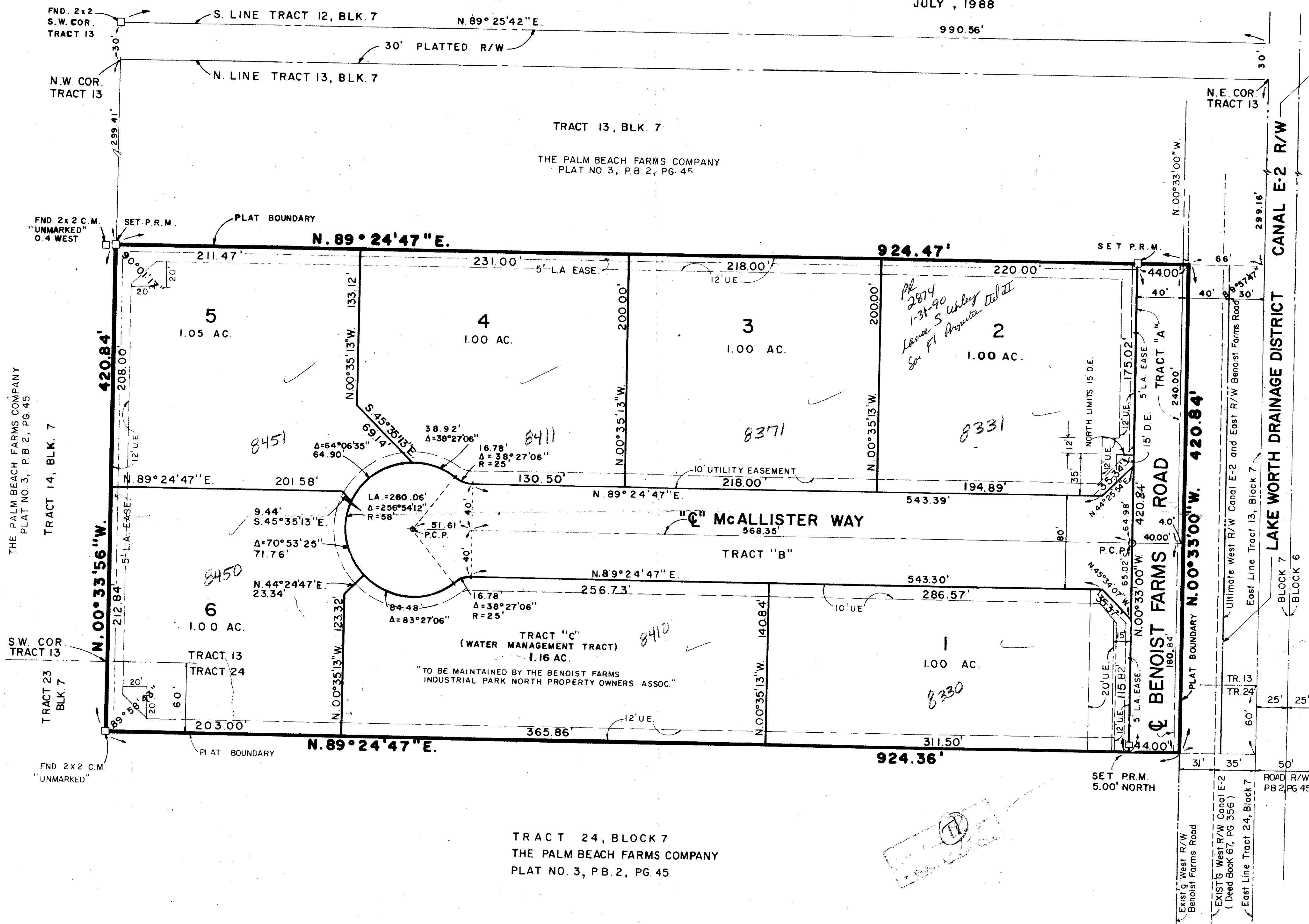


PLAT OF BENOIST FARMS INDUSTRIAL PARK NORTH

BEING A REPLAT OF A PORTION OF TRACTS 13 AND 24, BLOCK 7, PALM BEACH FARMS COMPANY, PLAT NO. 3, PLAT BOOK 2, PAGE 45, AND LYING IN SECTION 32, TOWNSHIP 43 SOUTH, RANGE 42 EAST, PALM BEACH COUNTY, FLORIDA.
SHEET 2 OF 2.
JULY, 1988



- GENERAL NOTES:**
1. \square = P.R.M. - Permanent Reference Monument
 2. \circ = P.C.P. - Permanent Control Point
 3. L.A. EASE = Limited Access Easement
 4. D.E. = Drainage Easement
 5. U.E. = Utility Easement
 6. M.E. = Maintenance Easement
 7. Plat Bearing shown on East property line of N.00°33'00"W. is relative to Palm Beach Farms Company Plat No. 3, in Plat Book 2, Page 45 and all other bearings shown hereon are relative thereto.
 8. Building Setback Lines shall be as required by Palm Beach County Zoning Regulations.
 9. There shall be no building or any kind of construction placed on utility, drainage or maintenance easements, except as may be permitted by Palm Beach County, Florida.
 10. There shall be no trees or shrubs placed on drainage easements, maintenance easements, or utility easements for water and sewer.
 11. Landscaping may be placed on utility easements other than water and sewer only after the consent of all utility companies occupying same.
 12. Where utility and drainage easements cross, drainage easements shall take precedent.
 13. There may be additional restrictions that are not recorded on this plat that may be found in the public records of this County.
 14. Bearings and distances shown hereon are plotted to existing monumentation for Tracts 13 and 24, Block 7 and represents the intent of the Deed Description.

THE PALM BEACH FARMS COMPANY
PLAT NO. 3, P.B. 2, PG. 45
TRACT 14, BLK. 7

TRACT 23
BLK. 7

FND 2x2 C.M.
"UNMARKED"

TRACT 24, BLOCK 7
THE PALM BEACH FARMS COMPANY
PLAT NO. 3, P.B. 2, PG. 45

THE PALM BEACH FARMS COMPANY
PLAT NO. 3, P.B. 2, PG. 45

Benoist Farms Industrial Park North
 SUBDIVISION: *Benoist Farms Industrial Park North*
 BOOK: 63 PAGE: 66
 FLOOD ZONE: B FLOOD MAP #150A
 QUAD: 11 ZONING: IL
 SEE 88-42 ZIP CODE: 33460
 P.L.D. NUMBER: TAZ 821 33460

0545-001
RET. 88-42

63/66